

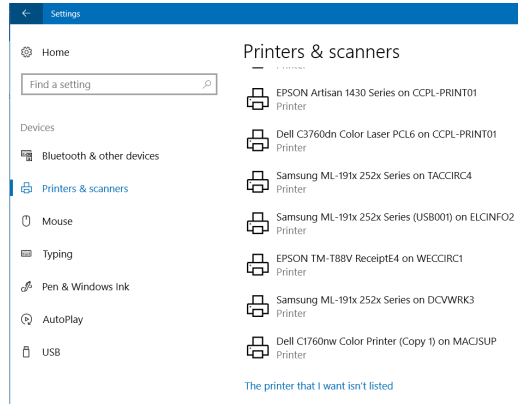
Login to SPOT.

Download the available Windows printer driver. This is not an installer, it will extract the driver files to the computer in a folder named **HP\_Color\_Laserjet\_Enterprise\_M553** on the C drive.

Add the printer manually. (Windows 10)

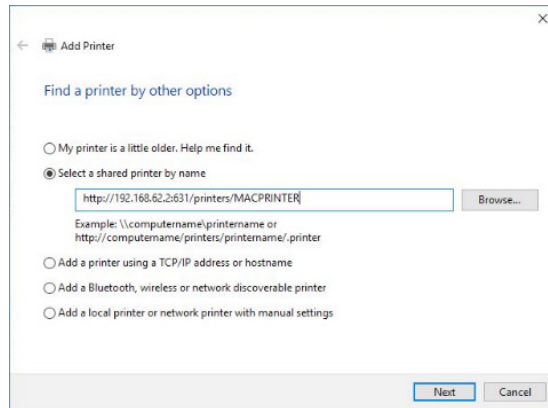
**Settings -> Devices -> Printers & scanners -> Click Add printer or scanner**

After a short search, click on **The printer that I want isn't listed.**

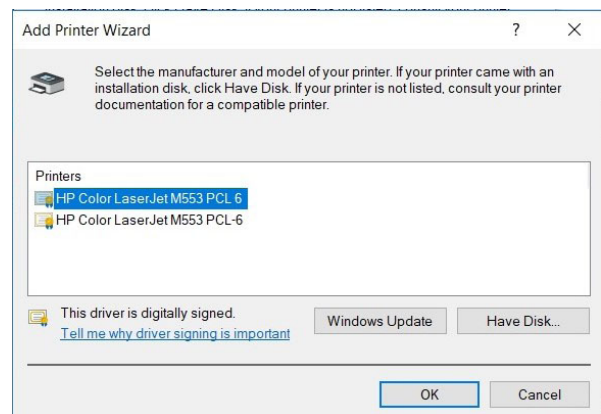
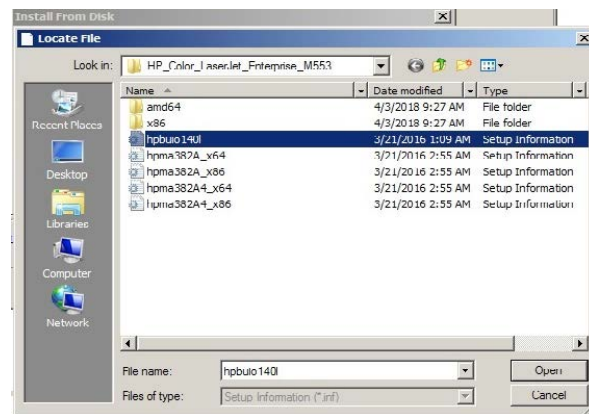


In the box that appears, choose **Select a shared printer by name** and fill in the box with the URL:

**http://192.168.62.2:631/printers/MACPRINTER** (this URL can be found and copied from the SPOT page).



After clicking Next and Windows finds the printer, click on **Have Disk**. Browse to the folder **c:\HP\_Color\_Laserjet\_Enterprise\_M553** and click **OK**. Select the first file and click **Open**.



Select the printer **HP LaserJet 500 color M553 PCL6** and click **Ok** or **Next**. The printer will install.

**Note:** *Wi-Fi printing requires cash only. Library card balances cannot be used towards Wi-Fi printing. Exact change is recommended, as change cannot be given once your session ends.*

